

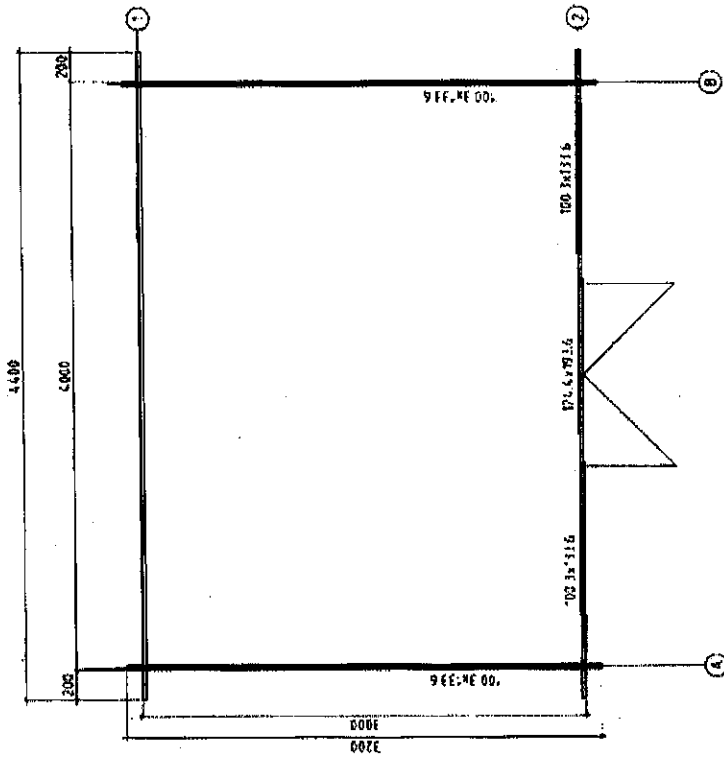
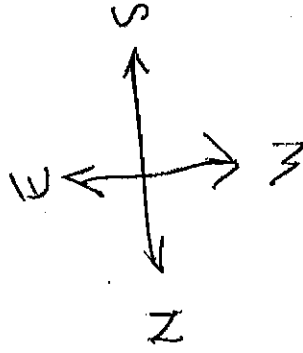
X = proposed out building



ATTN MISS ROSEANNE LILLYWHITE  
 P12/V1781/HH  
 FLOOR PLAN

1:50

1cm  $\equiv$  50cm  
 2cm  $\equiv$  1m



PROPOSED WOODEN  
 BUILDING  
 1 LUMBER PART  
 0x14 20G

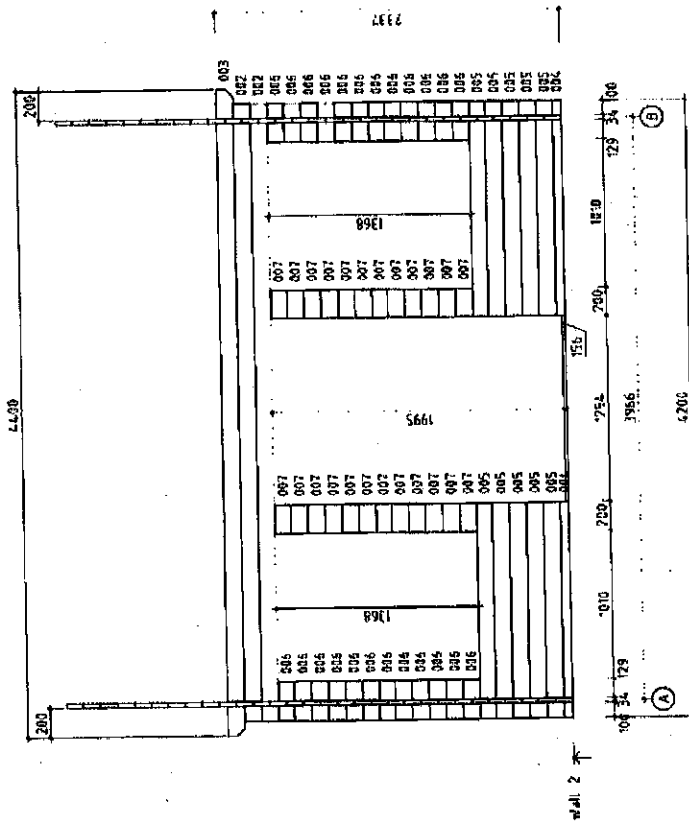
FRONT ELEVATION

1:50

1cm = 50cm

2cm = 1m

FACES WEST



LEFT HAND SIDE  
ELEVATION 1:50

1cm  $\equiv$  50cm  
2cm  $\equiv$  1m

FACES NORTH

